

NATIONAL
GEOGRAPHIC

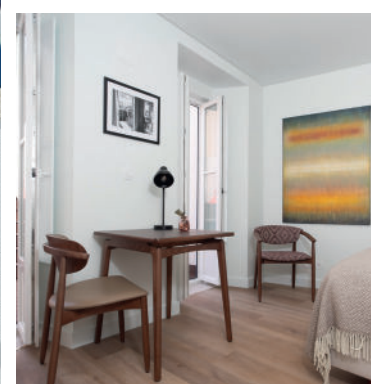
TRAVELLER

EUROPEAN CITIES

COLLECTION



2023



Casa Saint Jorge

LISBON, PORTUGAL

Enjoy the poetry and soul of Lisbon at Casa Saint Jorge. The property is located within the citadel of Saint George's Castle, in the heart of Lisbon's historical centre, overlooking the neighbourhoods of Alfama, Graça and Baixa. Sitting on the hilltop of the Castle, residents of Casa Saint Jorge appreciate the astonishing view of the Tagus River and breathtaking sunsets. Surrounded by traditional architecture dating as far back as the 12th century, this unspoiled and highly protected neighbourhood is very close to the famous attractions and restaurants of Lisbon.

The building is divided into seven luxury serviced suites; the result of a deep and total restoration, which was completed in summer 2020 under the close supervision of the Department for Cultural Heritage. Most apartments enjoy a panoramic view of the Tagus River and the estuary of Lisbon with its unforgettable sunsets, some having a large terrace or a balcony. The ground-floor flat has a small private patio. All apartments offer nights with absolute silence and can host two to four guests.

Most are furnished with a living room and fully equipped kitchen. The apartments have been designed for guests wanting to feel at home while spending a few nights, or a longer stay in Lisbon.

Casa Saint Jorge is part of the Hermitage Castelo collection. Its portfolio is made of traditional and historical buildings entirely renovated for the benefit of the city and the pleasure of its visitors. Hermitage Castelo brings a mix of contemporary design and art while preserving Portuguese tradition for a memorable stay in the heart of Portugal's sunny capital.

As an alternative to Casa Saint Jorge, guests may also want to stay at Casa Chafariz, a famous building adjoining the Chafariz da Esperança, built in 1760, and located in the design district of Santos. And, after having being seduced by the poetry of Lisbon, guests might return to the city during summer 2024 and enjoy one of the luminous and large flats of the Casa Sé. Currently under full renovation, it lies a few steps away from the Cathedral of Lisbon, in the romantic district of Alfama, the birthplace of fado music.

Need to know

KEY FACILITIES

- Seven serviced apartments
- Tagus River views

Get in touch

hermitagecastelo.com

T : +351 214 09 07 37

E : inquiries@hermitagecastelo.com

Don't miss Watch the sunset from the Miradouro do Recolhimento viewpoint, which offers astonishing views over the city and Tagus River

NATIONAL
GEOGRAPHIC
TRAVELLER

EUROPEAN CITIES

COLLECTION

2023

Casa Saint Forge

FEATURED IN

**NATIONAL GEOGRAPHIC TRAVELLER (UK)
EUROPEAN CITIES COLLECTION**

HOTELS - EXPERIENCES - TRENDS - DESTINATIONS

NATIONAL
GEOGRAPHIC
TRAVELLER

EUROPEAN CITIES

COLLECTION

2023